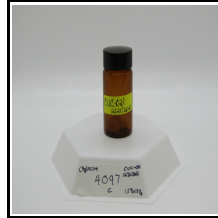


CUSTOMER INFORMATION

Customer: Chylocure

SAMPLE INFORMATION

Sample Name: CUC-021/12/21/2021
Sample Description: Topicals
Sample ID: SAMPLE- 4097
Sample Received On: 02/23/2021
Batch ID: N/A



CANNABINOID POTENCY				Date Tested: 02/24/2021 Operator: Shawn Manns	
ANALYTE	LOD (mg/g)	LOQ (mg/g)	Concentration (mg/g)	Concentration (%)	
CBD	0.02	0.07	2.61	0.26	
CBDA	0.02	0.07	18.93	1.89	
delta-9 THC	0.02	0.07	0.24	0.02	
delta-9 THCA	0.02	0.07	0.52	0.05	
CBG	0.02	0.07	0.26	0.03	
CBGA	0.02	0.07	0.37	0.04	
CBN	0.02	0.07	ND	ND	
CBC	0.02	0.07	0.12	0.01	
delta-8 THC	0.02	0.07	ND	ND	
THCV	0.02	0.07	ND	ND	
Total CBD			19.21	1.92	
Total THC			0.70	0.07	

Total CBD = CBDA * 0.877 + CBD

Total delta-9 THC = THCA * 0.877 + delta-9 THC

The Measurement Uncertainty for Total THC at 0.3% is +/-0.05%. The range for Total THC is 0.25%-0.35%.

ND = Not Detected, LOD = Limit of Detection, LOQ = Limit of Quantification

PPM = Parts per Million = mg/kg, PPB = Parts per Billion = ug/kg, CFU/g = Colony Forming Units per gram

Results below the LOQ are reported as ND.

Testing results are based solely on the sample submitted to ECC Test Lab in the condition it was received. This product has been tested by ECC Test Lab using valid testing methodologies. Values reported relating only to the product tested. ECC Test Lab makes no claims as to the efficacy, safety, or other risks with any detected or non-detected levels of any compound reported herein. This Certificate of Analysis shall not be reproduced except in full without the express written consent of the ECC Test Lab.

Prepared By:



Shawn Manns, Lab Manager

Approved By:



Rebecca Hobden, CEO & Founder